



MONTHLY MEMBERSHIP PROGRESS REPORT

District 323 G1

Results as of: 3/31/2017

GMT: KAMLESH JAIN

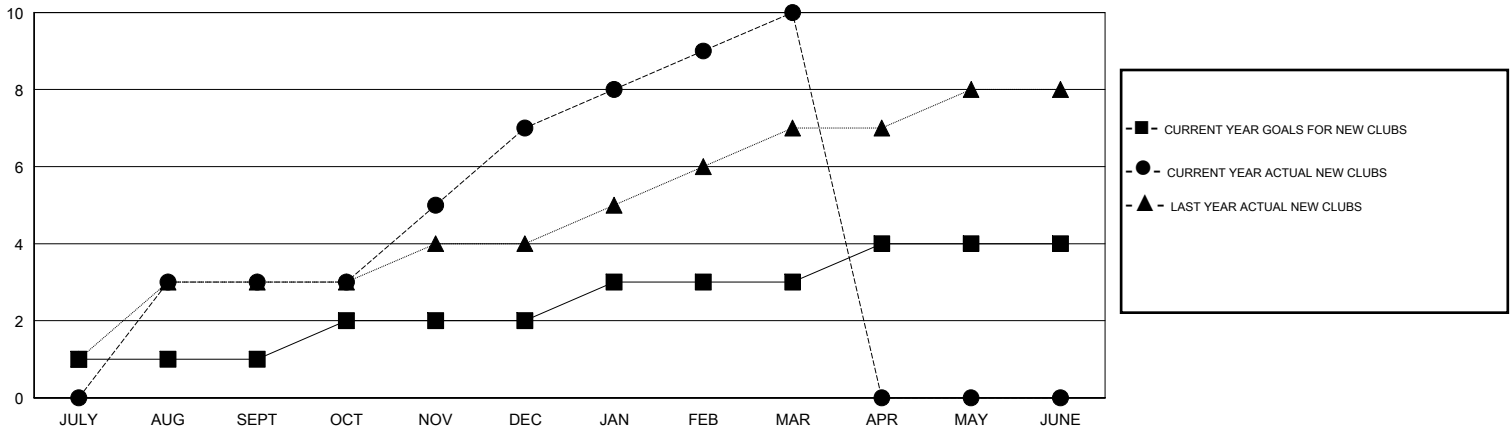
LOCATION INDIA

GMT CA

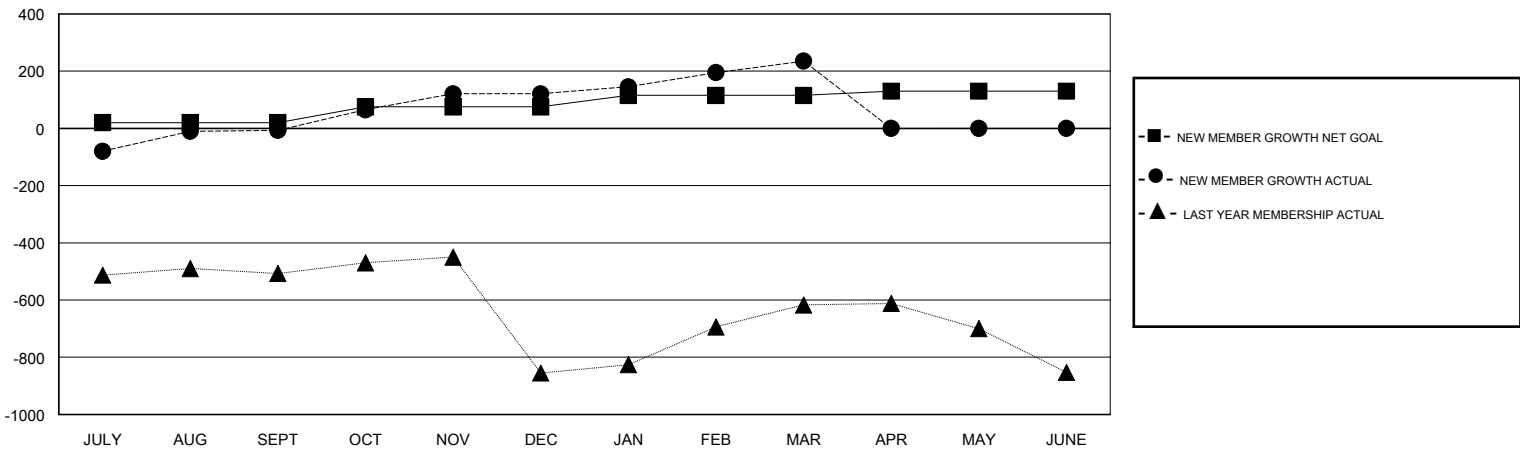
Clubs			
RESULTS FOR 2016-2017			
QUARTER	NEW CLUB GOAL	NEW CLUBS	DROPPED CLUBS
JULY/AUG/SEPT	1	3	0
OCT/NOV/DEC	1	4	1
JAN/FEB/MAR	1	3	0
APR/MAY/JUNE	1	0	0

Members			
RESULTS FOR 2016-2017			
QUARTER	NEW MEMBER GROWTH NET GOAL (not reinstated or transfers)	NEW MEMBER GROWTH ACTUAL (not reinstated or transfers)	DROPPED MEMBERS ACTUAL (including transfers)
JULY/AUG/SEPT	20	124	131
OCT/NOV/DEC	55	187	59
JAN/FEB/MAR	40	150	36
APR/MAY/JUNE	15	0	0

GOALS AND ACTUAL NEW CLUBS CUMULATIVE



GOALS AND ACTUAL MEMBERS CUMULATIVE



DROPPED CLUBS: 1	62 CLUBS OF 121 ADDED 1 OR MORE NEW MEMBERS	<u>GENDER DISTRIBUTION</u>	
DROPPED MEMBERS		MALE	2,790 (72.71%)
DECEASED	4	FEMALE	1,047 (27.29%)
CLUB CANCELLED	12	TOTAL FAMILY UNIT MEMBERS 1,491	
OTHER	210	FAMILY MEMBERS PAYING HALF DUES 823	
TOTAL	226		

[CLICK HERE FOR CUMULATIVE MEMBERSHIP DATA](#)